

A Mild Methylation of Whole Leaf Producing Per-O-methyl Cellulo Di-phospho Amino Acid (Dipeptide)

Jesus' Christus, Michael Arden Madson

Research and Development, BioLogistics Limited Liability Company, Ames, Iowa, United States of America

Email address:

mmadson53@earthlink.net (M. A. Madson)

To cite this article:

Jesus' Christus, Michael Arden Madson. A Mild Methylation of Whole Leaf Producing Per-O-methyl Cellulo Di-phospho Amino Acid (Dipeptide). *Plant*. Vol. 8, No. 1, 2020, pp. 10-16. doi: 10.11648/j.plant.20200801.12

Received: March 5, 2020; **Accepted:** March 20, 2020; **Published:** April 28, 2020

Abstract: A mild methylation method is detailed in this work. It uses 1N NaOH to deprotonate primary and secondary hydroxyl groups for short time. Excess 1N NH₄OH (1.00 ml, pH 11.4) is added, followed by NaHCO₃ to make the carbonate esters by nucleophilic substitution of the deprotonated primary and secondary OH groups. The reaction conditions include; ambient temperature and for an appropriate time. Then NaBH₄ is added and the reaction conditions are; standing at ambient temperature for at least 4 hours. This converts the carbonate esters to the methyl ethers. Work-up includes transferring the methylated switchgrass leaf section to a vial containing 1N HCl (1.00 ml). The leaf needs to be submerged in the acid. The reaction conditions include; heating the reaction vessel at 72°C, for 4 days. The contents of the vial are reduced in volume to syrup with a stream of air. The mixture dissolves completely in methanol. Mass spectrometry is done on a methanol solution in the negative ion ESI mode. The mass spectral interpretation reveals the presence of methylated glucan amino acids and glucan dipeptides. The molecules identified were per-O-methylated glucans linked to either serine or asparagine through a di-(hydrido) di-phospho di-hydratepe moiety. It is possible that one ion is derived from a phosphorylated tyrosine linked to either the serine or asparagine linked to an originally di-phospho cellulo-glucan.

Keywords: Mass Spectrometry, Novel Mild Methylation Method, Cellulo-dipeptides, Per-O-methyl Cellulo-peptides, Glucan-Peptide Linkage

1. Introduction

Methylation methods have been used to determine the position of substitution for oligosaccharides and polysaccharides. [1, 2] However, the conditions of most methods require the use of strong base, to ionize methylatable hydroxyl groups on secondary and primary alcohols. The pKa of these groups is ~17. The pH of 1N NaOH is, theoretically 14.0, however commercial pH meters cannot measure this pH. Typically strong base will cause degradation of carbohydrates. One type of base catalyzed degradation product is the saccharinic acids. [3] This leads to 'peeling' whereby the monosaccharide at the reducing end of the oligo- or polysaccharide is eliminated, 'peeled off'. The method proposed here uses the reduction of carbonate esters to ethers. [4] This is done by making the carbonate esters and then treating the newly formed carbonate ester with NaBH₄ in NH₄OH. [5] The reduction of sulfate and phosphate esters is accomplished via this method, as well. [6] These reaction

conditions also allow us to isolate glycan-protein linkages for cellulose and their submission to mass spectral analysis and interpretation. [7-10] We also show support for the phosphorylation of tyrosine linked to serine or asparagine to cellulo-glucan. [10-13] There are three bovine glycan-peptide linkages that we have isolated via this method. [14-16]

2. Materials and Methods

Switchgrass leaf, freshly harvested, green, was placed in a reaction vessel. NaOH (1N) was added and allowed to stand at ambient temperature for 2 minutes. Then NH₄OH (1 N, pH 11.4, 20 times the volume of NaOH) was added. Solid NaHCO₃ was added (1 mg) and the mixture allowed to stand at ambient temperature for two hours. NaBH₄ (3 microliters of a 4N solution) was added and the mixture was allowed to stand at ambient temperature for 20 hours. The resulting leaf section was removed and placed in a vessel containing HCl (1 N, 1.00 ml). The leaf section was completely submerged

in the acid. The mixture was placed in an oven. The temperature was maintained at 72°C. After 4 days the reaction vessel was removed from the oven, the leaf was completely dissolved. The solution was evaporated to a syrup

with a stream of air. The contents of the vessel were completely soluble in methanol. The sample was analyzed by ESI ms and ms/ms by the Rheinhold group at the University of New Hampshire, USA.

3. Results and Discussion

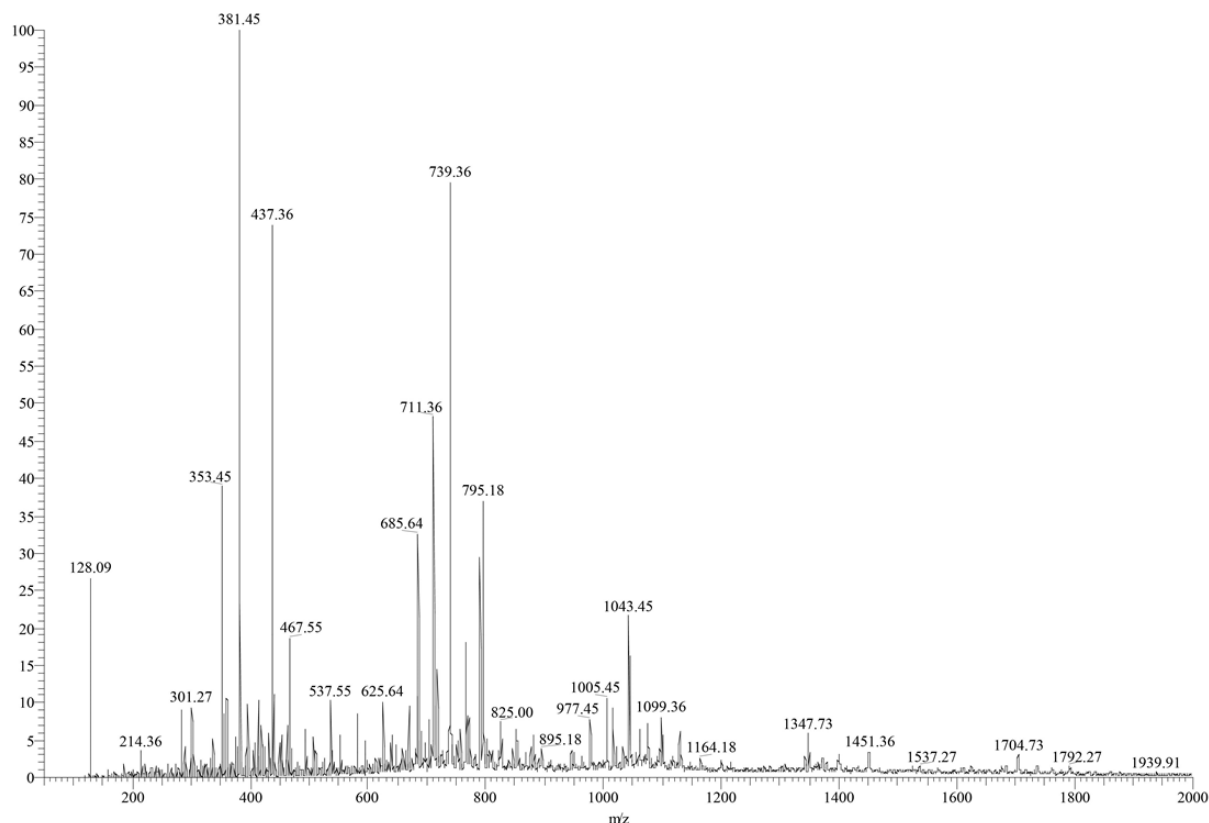
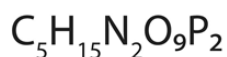
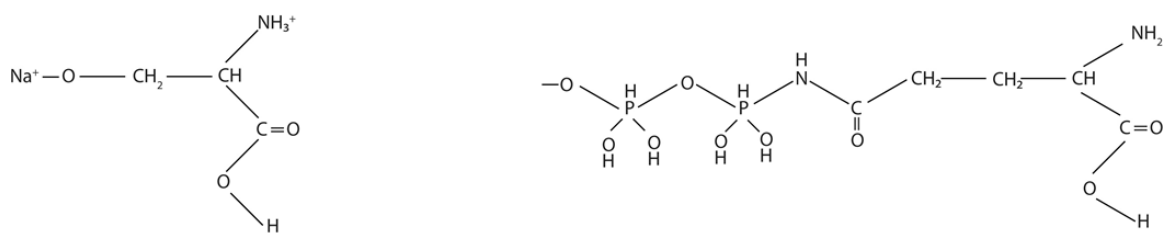


Figure 1. Mass spectrum of *per-O-methylated cellulose* isolated after novel methylation analysis.

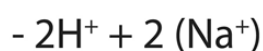
Figure 1 shows the negative ion mass spectrum ESI of the methanol soluble reaction product from switchgrass leaf.



128.06 calculated

128.09 found

$\Delta = 0.03$ amu



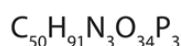
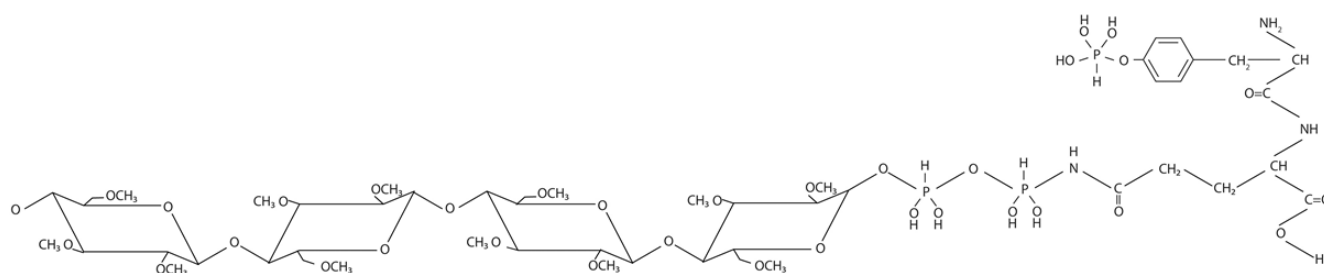
353.10 calculated

353.45 found

$\Delta = 0.35$ amu

Figure 2. Serine and asparagine portions of the total molecules.

In Figure 2 ions, m/z 128.09 and m/z 353.45, structures are drawn. They represent the components of the total cellulose dipeptides. The ion, m/z 128.09, is the zwitterion, Na^+ salt, of serine. The ion, m/z 353.45, is derived from di-(hydrido) di-phospho di-hydrate asparagine. These are components of O-linked oligosaccharide dipeptide and N-linked oligosaccharide dipeptide.



$$\frac{-2\text{H}^+ + 3(\text{NH}^+)}{2}$$

711.55 calculated
711.36 found
 $\Delta = 0.19$ amu

$$\frac{-1\text{H}^+ + 1\text{H}^+}{2}$$

685.50 calculated
685.64 found
 $\Delta = 0.14$ amu

Figure 3. Ions, m/z 711.36 and m/z 685.64, are cellotetraose derivatives.

Figure 3 describes pictorially the structure for ion, m/z 685.64. It is a per-O-methyl di-(hydrido) di-phospho di-hydrate, losing one H^+ and gaining one H^+ ion. The molecule is a cellotetraose derivative.

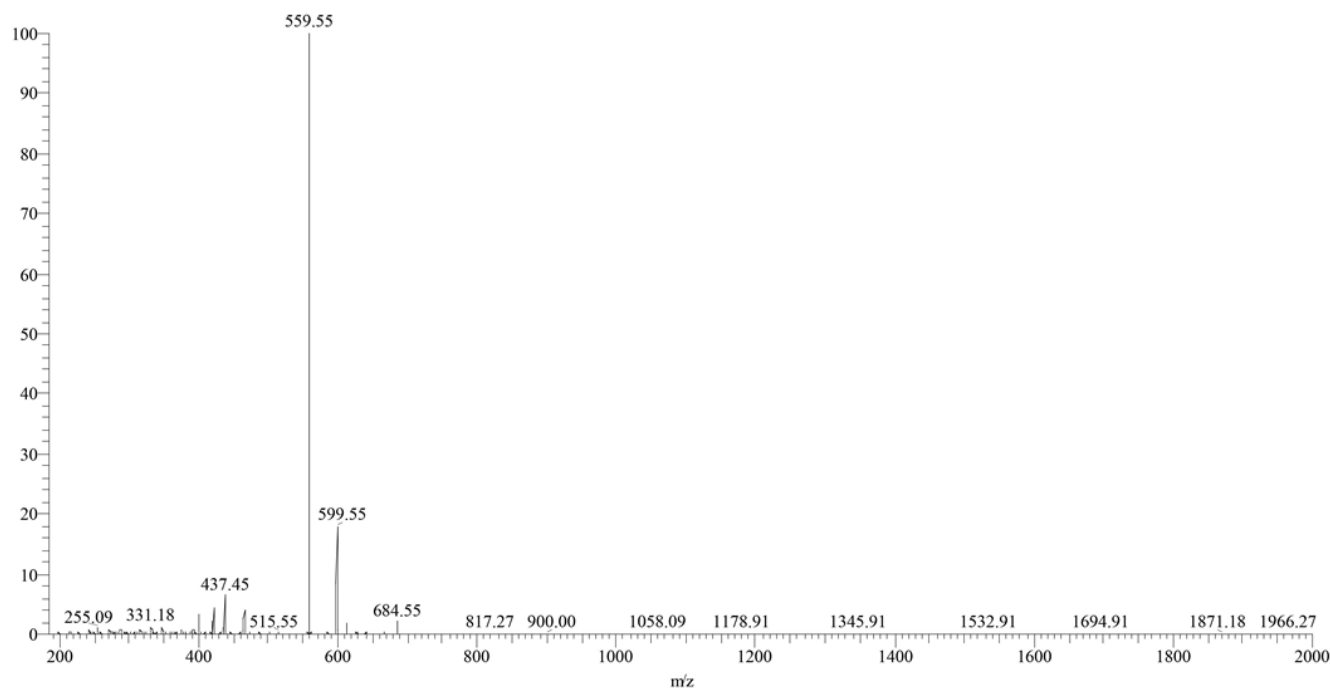
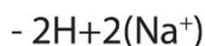
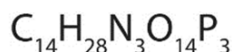
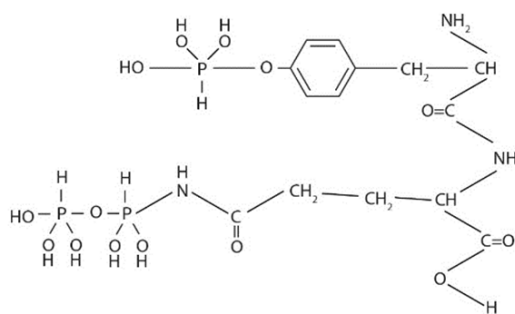


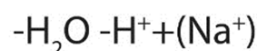
Figure 4. MS^2 of parent ion, m/z 685.64.

The parent ion, m/z 685.64, was subjected to ms/ms and its spectrum is shown in Figure 4.



599.27 calculated

599.55 found

 $\Delta = 0.28 \text{ amu}$ 

559.27 calculated

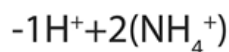
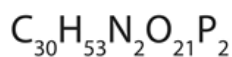
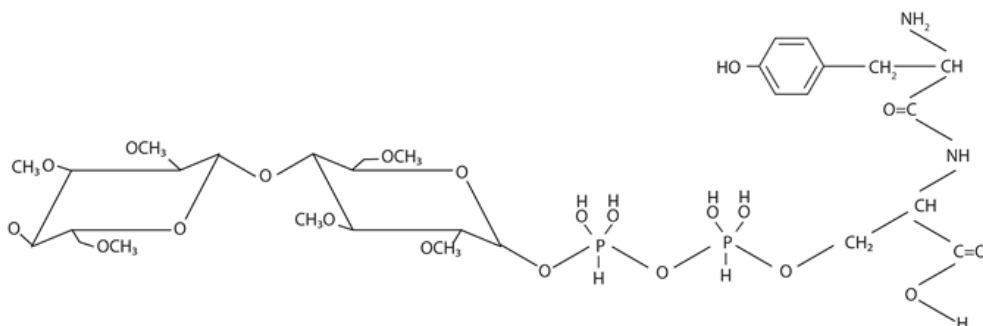
559.23 found

 $\Delta = 0.04 \text{ amu}$

Figure 5. Daughter ions, m/z 559.23 and m/z 599.55, from parent ion, m/z 685.64.

In Figure 5 two ions are of appreciable intensity, m/z 559.23 and m/z 599.55. Their structures are drawn in Figure 5. These two ions can be derived from the one structure in Figure 3. The tyrosine is substituted with derivatized

phosphate ester. The sulfo derivative does not comply with the mass constraints and any reasonable structure for these ions. A method for the discernment of phosphate versus sulfate esters, normally isobaric, has been reported. (6)



432.33 calculated

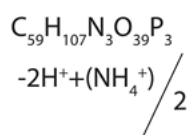
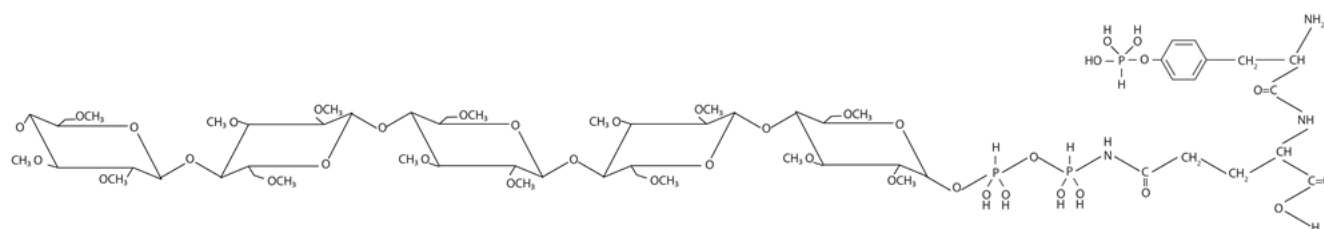
437.36 found

 $\Delta = 0.03 \text{ amu}$

Figure 6. Ion, m/z 437.36 amu.

Tyrosine is not substituted with (hydrido) phospho hydrate.

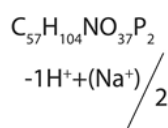
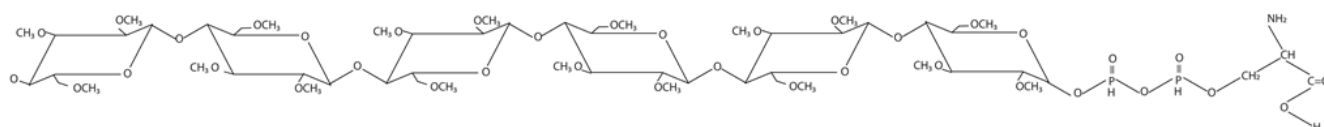
Figure 6 depicts the structure of the ion, m/z 437.36. The tyrosine is not phosphorylated (in derivative form) in this structure.



795.60 calculated
795.18 found
 $\Delta = 0.42$ amu

Figure 7. Ion, m/z 739.36, is characterized by a cellulohexaose.

In Figure 7 the structure for m/z 795.18 is a cellulopentaose derivative. It has the (hydrido) phospho hydrate substitution of tyrosine asparagine oligosaccharide dipeptide. Ion, m/z 711.36, is the cellotetraose derivative less $2H^+$ ions and adds $3NH_4^+$ ions divided by 2. The difference between calculated and found formula weight is well within acceptable variation.



739.55 calculated
739.36 found
 $\Delta = 0.19$ amu

Figure 8. Ion, m/z 795.18, is a cellulopentaose which is linked to the derivatized di-phospho asparagine.

Figure 8 ion, m/z 795.18, suggests a per-O-methyl cellulohexaose substituted with the asparagine amino acid linked to the oligosaccharide by a di-(hydrido) di-phospho di-hydrate.

Figure 9 The ion, m/z 381.45, is characterized by an asparagine linked di-(hydrido) di-phospho di-hydrate per-O-methyl disaccharide.

Attempts to determine the sulfo (di-hydrido) substitution

failed, which suggests the robustness of the phospho/sulfo mass spectral discernment method previously noted. (6) The protein-cellulose linkage in plants is much like the linkage of carbohydrate to protein in bovine systems. The phospho tyrosine moiety in proteins in animals, like K casein, can be important in cell signaling by the action of protein kinases and phosphatases.

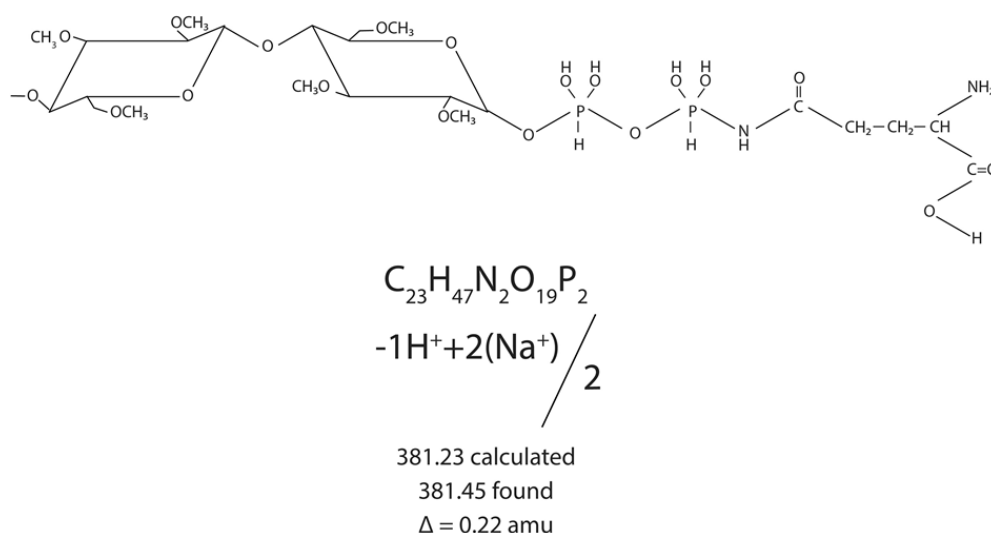


Figure 9. Ion, m/z 381.45 is an asparagine linked to per-*O*-methyl cellulobiose.

It is evident from the Figures, detailing the structures of found ions that the protein cellulose linkage has been isolated. This is also evident for K casein, bovine thyroglobulin and bovine milk. [15, 16, 17] It is not known under what conditions of the reaction produces the molecules by treatment with NaBH_4 in NH_4OH . Except for one structure the amino acid, or dipeptide, connection to the cellulose, the di-phospho derivative is hydrated. The stability of the di-hydrate can be explained. That is, with the loss of 2 H_2O molecules, the anhydro phospho group is produced. The $\text{P}=\text{O}$ double bond puts the non-bonding electrons on the O atom of the $\text{P}=\text{O}$ double bond in an antiperiplanar alignment with C-1 to O-1 bond of the sugar. This would make the C-1 to O-1 bond weaker. The C-1 atom becomes more susceptible to attack by H^- nucleophile, producing the 1,5 anhydro molecule. This phenomenon has been shown for K casein, bovine thyroglobulin and bovine milk. The hydrate is probably tetrahedral and thus there is no opportunity for antiperiplanar alignment. One explanation for the presence of the amino acid (dipeptide) linked to glycan is that pH drops when the reaction vessel is uncapped. It could be enough to hydrolyze the peptide and the di-(hydrido) di-phospho di-hydrate. Peptides can be hydrolyzed to amino acids or dipeptides at lowered pH and long reaction times. The pK_a of the amide linkage is approximately 9.5. The evolution of NH_3 gas from the NH_4OH in the reaction mixture would drop the pH significantly.

The cellulo-peptide may be helpful in finding how the growing cellulose chain is anchored to protein.

4. Conclusions

A mild methylation method is detailed here, mild enough to allow isolation of phosphate-(derivatized)-linked glycan-amino acid (dipeptide) linkages.

Novel chemistry is used; preparation of carbonate esters and conversion to methyl ethers with $\text{NaBH}_4/\text{NH}_4\text{OH}$ aqueous solution.

Cellulo-oligosaccharides are linked to serine and asparagine.

Glucan phospho-tyrosine serinyl or asparaginyl dipeptide was isolated.

The cellulose linkage to protein has been discovered using this mild methylation

Acknowledgements

The authors would like to acknowledge Isaac Woolery for his dedication and high quality work and character working even while ill with an assist to Tessa. Thanks go to Pastor Jeff Alvestad and Street Evangelist Ricardo Samiento and Pastor Beth Bachman Caufield.

References

- [1] Bjorndal, H.; Hellerqvist, C.; Lindberg, B.; Svensson, S.; Gas-liquid chromatography and mass spectrometry in methylation analysis of polysaccharides; *Angewandte Chemie International Edition in English* 9 (1) 610-619 (1970).
- [2] Harris, P.; Henry, R.; Blakeney, A.; Stone, B.; An improved procedure for the methylation of oligosaccharides and polysaccharides *Carbohydrate research* 127 (1) 59-73 (1984).
- [3] Sowden, J.; The saccharinic acids *Advances in carbohydrate chemistry* 12 55-79 (1957).
- [4] Hough, L.; Priddle, J.; Theobald, R.; The carbonates and thiocarbonates of carbohydrates; *Advances in carbohydrate chemistry* 15, 91-158 (1961).
- [5] Madson, M.; Manufacturing of MeOH, formaldehyde, formic acid and ammonium pentaborate tetrahydrate from carbon dioxide patent US 8,695,355 B2 (2014).
- [6] Madson, M.; Method of discerning substitution of carbohydrate esters patent US 9,726,671 B2 (2017).
- [7] Glinski, M.; Weckworth, W.; The role of mass spectrometry in plant systems *Mass spectrometry reviews* 25 (2) 173-214 (2006).

- [8] McQuire, C.; Roseman, S.; Enzymatic synthesis of the protein hexosamine linkage in sheep submaxillary mucin; *Journal of biological chemistry* 242 (16) 3745-3747 (1967).
- [9] Zhang, Y.; Zhang, P.; West, C.; A linking function for the cellulose-binding protein SPBS in the spore of *Dictyostelium discoideum* *Journal of cell science* 112 (23) 4367-4377 (1999).
- [10] Shinohara, H.; Ogawa, H.; Matsubayashi, H-S.; Tyrosine sulfated glycopeptides involved in cellular proliferation and expansion *Proceedings of the National Academy of Sciences, USA* 104 (46) 18333-18338 (2007).
- [11] Denu, J.; Stuckey, J.; Saper, M.; Dixon, J.; Form and function in protein dephosphorylation *Cell* 87 (3) 361-364 (1996).
- [12] Nadam, D.; Knutson, E.; Lo, R.; Renig, N.; Exploration of cell signaling machinery activation of macrophage phospho tyrosine phosphatases as a mechanism of molecular microbial pathogenesis *Journal of leukocyte biology* 67 (4) 464-470 (2000).
- [13] Mitho, S.; Boersema, I.; Berke, L.; Snel, B.; Heck, A.; Menke, E.; Targeted quantitative phospho proteome approach for the detection of phospho-tyrosine signaling in plants *Journal of proteome research* 1 (1) 438-448 (2012).
- [14] Christus, J.; Madson, M.; Possible treatment of *Mycobacterium lepramatous* with bovine milk *World journal of food science and technology* 2 (1) 55-61 (2018).
- [15] Christus, J.; Madson, M.; Possible mimics of Duffy Binding Protein-II for *Plasmodium vivax* binding endothelial cells or binding of *Plasmodium falciparum* by mimicking epitope on erythrocyte binding antigen-175 A *World journal of food science and technology* 2 (2) 44-51 (2018).
- [16] Christus, J.; Madson, M.; Preparation of possible P selectin inhibitor from bovine thyroglobulin, (di-hydrido) sulfo hydrate 1,5 anhydro L-fucitol. *World journal of food science and technology* accepted for publication (2019).
- [17] Richmond, T.; Sommerville, C.; The cellulose synthase superfamily *Plant physiology* 124 (2) 495-498 (2000).
- [18] Endler, D.; Persson, S. Cellulose synthases and synthesis in *Arabidopsis* *Molecular plant* 4 (2) 199-211 (2011).