



Risk Assessment on Trace Metals in Groundwater and Springs in Urban Environment of Zanzibar Island

Abdul Ali Juma Mohamed*, Sara Abdalla Khamis, Haji Mwevura, Miza Ali Kombo, Said Suleiman Bakari

Department of Natural Sciences, State University of Zanzibar (SUZA), Zanzibar, Tanzania

Email address:

jumabdull@yahoo.com (A. A. J. Mohamed)

*Corresponding author

To cite this article:

Abdul Ali Juma Mohamed, Sara Abdalla Khamis, Haji Mwevura, Miza Ali Kombo, Said Suleiman Bakari. Risk Assessment on Trace Metals in Groundwater and Springs in Urban Environment of Zanzibar Island. *International Journal of Environmental Monitoring and Analysis*. Vol. 4, No. 2, 2016, pp. 45-55. doi: 10.11648/j.ijjema.20160402.12

Received: March 13, 2016; **Accepted:** March 22, 2016; **Published:** April 1, 2016

Abstract: Urban-west region is the most highly populated region of Zanzibar. More than half of the Zanzibar populations reside at this region. Groundwater is the main resource of drinking water in this area, and currently there is no drinking water treatment plant; hence, the suitability and appropriateness of groundwater resources for drinking and other domestic uses is of public and scientific concern. In this study, groundwater samples were collected from 30 sites in urban areas of Zanzibar Island in December 2012. Measurements, and investigation of the levels of trace metals in water including Cd, Co, Cr(III), Cu, Fe, Li, Mn, Mo, Sb, Se, Ti, and Zn were measured in thirty locations in Zanzibar urban west region using Inductively Coupled Plasma Emission Spectroscopy (ICP-OES). The paper also highlights and depicts the estimate of the degree of metal contamination (C_d), hazard quotient which yields hazard index (HI), heavy metal evaluation index (HEI), and heavy metal pollution index (HPI). Using the four heavy metals (Cd, Zn, Cu, and Fe), the degree of contamination (C_d) in all water sources were less than 1, thus they fall in to the category of low degree of contamination. The general trend of the average daily dose (ADD) of Zn, Cu, Fe, and Cd in water sources was $Zn > Cu > Fe > Cd$. As the severity of metal toxicity is governed by several factors, such as dose, nutrition, age, and even life style. Therefore, this trend might not guarantee the absence of human health risk. Generally, from risk assessment on trace metals using risk indices (C_d , HPI, HI and HEI), the analyzed water sources might not be at the alarming health risk. However, due to an increasing level of environmental pollution, water sources might be potential sink of contaminants; this is significant reason that makes the treatment of drinking water and monitoring implementation inevitable.

Keywords: Zanzibar, Degree of Contamination, Risk Assessment, Health Risk, Environmental Pollution

1. Introduction

Water is an essential compound for all forms of life in the Earth planet. Springs and groundwater are the two main sources of water used for domestic and other social purposes in Zanzibar. The exploitation of water from groundwater aquifers has become a common practice in different areas of Zanzibar Island. Moreover, during rainy seasons, rainwater is also a potential source of fresh water for domestic and other social purposes and activities.

The issue of water quality is very poignant in many countries, but the vulnerability of water to contaminants due

to natural and anthropogenic sources has become a common problem worldwide [1]. Water is an inevitable need to man and his environment; it has existed throughout the history of the earth crust even before the existence of man. However, the water quality is persistently polluted in many countries of the world [2].

The importance of water quality for the health of human being and welfare is of a great interest and attention in the world. Access to sufficient, clean, and safe water is essential for human survival, and is one among the fundamental human rights. Regarding public health, limited access to safe water obviously undermines other public sectors such as public health, which can lead to communicable diseases. The

provision of potable drinking water has been highly assembled in national and international documents [3].

The issue of water quality is one of the poignant agenda in many countries. The exploitation and utilization of water from groundwater aquifers has become a common practice in different areas of Zanzibar Island. Nevertheless, the vulnerability of water to contaminants due to natural and anthropogenic sources seems to be a common phenomenon [1]. Moreover, both the qualitative and quantitative aspects of water resources might be vulnerable to deterioration due to environmental degradation. Very recently, about 2.7 million liters of water are anticipated to be lost at Chunga water supplies located at west region of Zanzibar owing poor utilization of the environment.

Fresh water supply is an important concern worldwide, about 90% of fresh water in the world originated from groundwater aquifers [4]. An aquifer is an underground component of saturated earth materials that can provide usable quantities of ground water to a well [5].

In Zanzibar, rapid rate of urbanization has increased demand of water, which necessitated the usage of groundwater to supplement the existing water supply systems, in most areas of the Island. Accordingly, the trend of developing privately owned water wells has increased to an amount that has outnumbered the public and community water source [1].

Water resources evaluation typifies a major concern of the present world due to the importance of water for human being and society in general [6]. Good water quality management is fundamental for the production of clean water for the human consumption and safety. Qualitative as well as quantitative determination of the contaminants, along with the predictions of their possible source(s) are vital in an attempt of tackling contamination problems in groundwater and surface water [1]. Therefore, an evaluation of drinking water quality is a crucial concern for implementing sustainable water-use strategies, plan, and policy.

Moreover, information about water quality analysis is always used as a basis to discuss utilizing groundwater in order to avoid associated water illnesses and health problems. [7] Groundwater quality depends, to some extents, on its chemical composition. Monitoring of the levels of cations and anions play important and indicative role in assessing degree of groundwater contamination [8]. Nevertheless, an access to good water quality supply and sanitation services has become a hot issue in most of developing countries, and still these services do not reach a significant proportion of the world's population. It has become a more challenging agenda due to factors such as rapid rate of urbanization and environmental pollution.

Harmful impurities from various sources such as, agricultural and domestic effluents, municipal sewerage are among the key factors, which deteriorate the quality portable water [9]. Trace metals are among a wide range of contaminants, which receive health concerns due to their potential toxicities even at very low concentrations. Trace metals gain entrance into human systems via contaminated

drinking water, air, and food. In the body, the metals can compete with, and displace essential minerals such as zinc, copper, magnesium, and calcium; and interfere with body biological organs, systems and functions [10]. Over a certain period, metals have tendency to bio-accumulate in tissues of living organisms [11]. However, some trace metals (such as zinc, copper, iron, and manganese) are the micronutrients; the body in small amounts for metabolic activities requires them. At higher concentrations, these same elements, can cause adverse health effects or illness [12].

Toxic metals such as cadmium (Cd), lead (Pb), arsenic (As), chromium (Cr), and thallium (Tl) do not have beneficial effects in humans. Long-term exposures to these metals may cause severe disruptions in the normal dysfunctioning of the organs and systems where the metals are accumulated. Pb, for example, is linked with a broad range of negative pregnancy outcomes, including cardiovascular diseases, early membrane rupture and spontaneous abortion, and erectile dysfunction [13]. Cadmium is very toxic and is linked to several cases of poisoning through food. Small quantities of cadmium cause adverse changes in the arteries of human kidney causing kidney damage. Moreover, cadmium replaces zinc biochemically and causes high blood pressures [14].

Metals such as Cd, Cr, V, As, Mn, Ti, Co, Cu, Fe, Pb, Ni, Zn, and their compounds have been suggested to be initiators or promoters of carcinogenic activity in animals. Furthermore, Be, Sb, Al, Hg, Ni, Cd and Co can cause undesirable reproductive/fertility problems [15].

Zinc toxicity can lead to diarrhea [16], manganese may slow down the intellectual development of the child [17]. Iron has been associated with repeated blood transfusions, genetic and metabolic diseases [18], and copper toxicity is related to several health concerns, including kidney disease, stomach cramps, nausea, vomiting, diarrhea, cancer, and liver damage [19].

The presence of chemical species in fresh water sources, such as groundwater aquifers and springs can be of natural or anthropogenic origins. The constituents present in water may pose many health risks to human, and other life when exceed the maximum contamination level. Because of the absence of drinking water treatment plants in Zanzibar, it is mandatory to assess, and to keep regular drinking water monitoring programs. Thus the objective of this study is to examine and highlighting the levels of twelve metals in groundwater and spring sources in urban west region of Zanzibar. The paper also reveals the correlation coefficients between the analyzed parameters, the estimate of the degree of metal contamination (C_d). Other hazard and pollution indices were also studied.

2. Materials and Methods

December 2012, samples of water were collected from twenty-eight ground water sources and two springs located at Urban-west region and its territories of Zanzibar Island. Geographic coordinates of all sampling points were recorded using the Global Positioning System (GPS). Sampling sites

are shown in Figure 1). Water samples from 30 locations were collected in sterile bottles (1000 mL) preserved, and analyzed by using standard methods for the examination of water and wastewater [20]. These water sources were closed hand dug well (CHDW), open hand dug well (OHDW), public bore well (PBW), spring water (SW), and bore well owned by private individual or community owned well (BWP). Prior to sampling process, all the bottles were

cleaned and rinsed thoroughly with water to be analyzed. All reagents used were of analytical grade. The water samples were stored at 4°C prior to laboratory chemical analysis. Metal analyzed are Cd, Co, Cr (III), Cu, Fe, Li, Mn, Mo, Sb, Se, Ti, and Zn. The concentrations of these metals were determined using ICP-OES (Thermo Scientific iCAP 6000). The ICP-OES is robust and can undergo multi elemental analysis [1, 3].

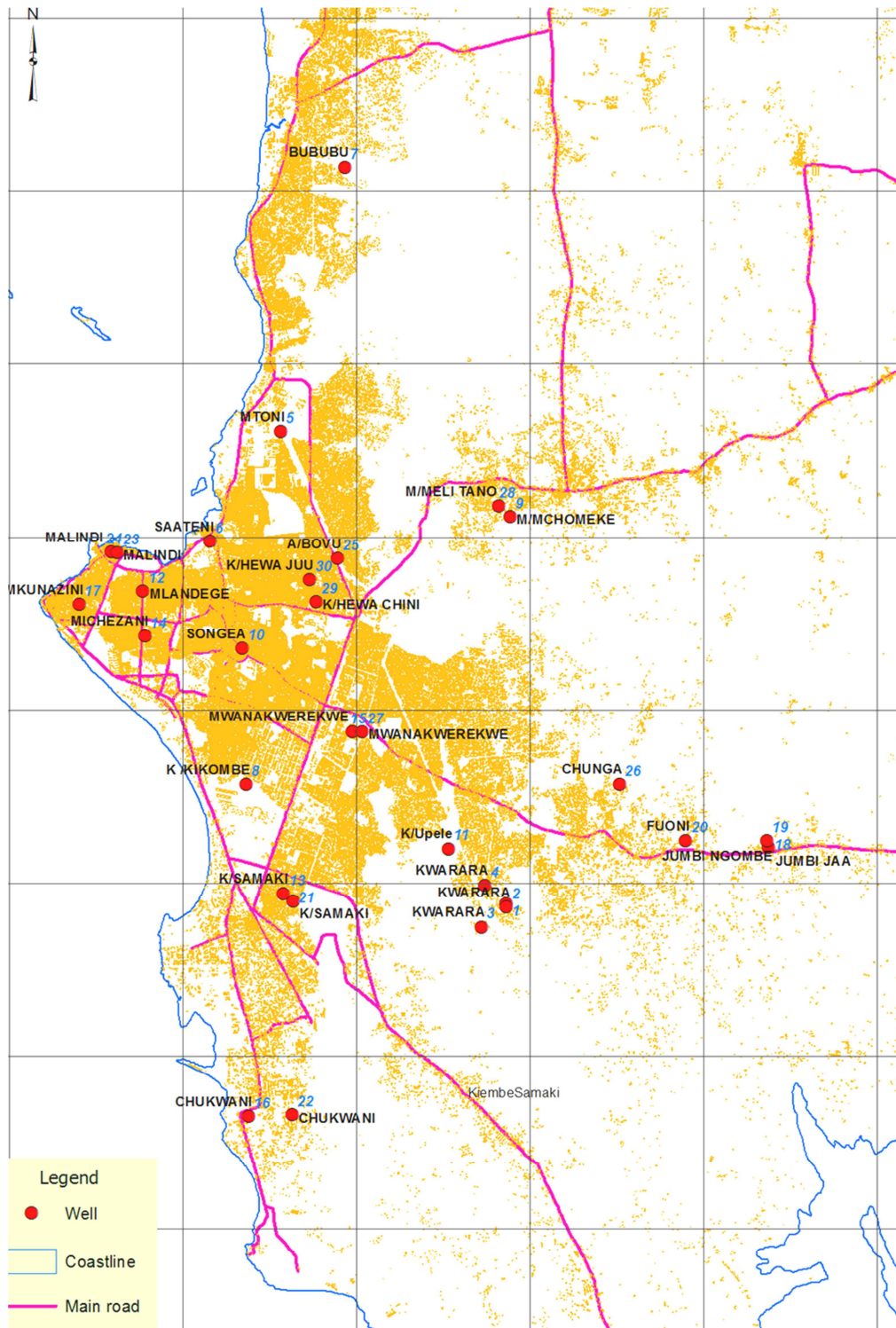


Figure 1. Map of sampling sites in Zanzibar Urban-West Region and territories.

2.1. Data Analysis

IBM Statistical Package for the Social Sciences (SPSS) version 16 was used to give descriptive statistics from the

data analysis. Concentrations of the analyzed trace metal within and between the water sources were not significant different (Table-1).

Table 1. Summary of the descriptive statistics of the analyzed parameters.

Parameters	df	F	Sig.	Mean	Std. Deviation	Minimum	Maximum	N
Cd	4	0.946	0.454	0.0006	0.00031	0.0001	0.0014	30
Co	4	1.912	0.140	0.0002	0.00026	BDL	0.0009	30
Cr(III)	4	1.262	0.311	0.0124	0.01809	BDL	0.0465	30
Cu	4	0.419	0.794	0.0069	0.02028	BDL	0.111	30
Fe	4	0.543	0.706	0.0031	0.00794	BDL	0.035	30
Li	4	1.196	0.337	0.0075	0.01758	0.0002	0.0985	30
Mn	4	0.329	0.856	0.0009	0.00233	BDL	0.0089	30
Mo	4	0.582	0.678	0.0002	0.00055	BDL	0.0028	30
Sb	4	0.710	0.593	0.0021	0.00173	BDL	0.0074	30
Se	4	0.867	0.497	0.0027	0.00413	BDL	0.0135	30
Ti	4	1.531	0.224	0.0038	0.00183	0.00031	0.0071	30
Zn	4	0.413	0.798	0.0158	0.04358	0.00013	0.2339	30

2.2. The Estimate of the Pollution Indices and Degree of Metal Contamination

The present study evaluated heavy metal pollution index (HPI) proposed by [21], the degree of contamination (C_d) developed by [22]. C_d is also gives an indication for the extent of metal pollution [23]. Degree of contamination in water resources can fall in to one of three categories, namely, low ($C_d < 1$), medium ($C_d = 1-3$), and high ($C_d > 3$) [23]. Another pollution index is “Heavy metal evaluation index” (HEI), it gives an overall quality of the water with respect to heavy metals [24]. Figure A2 shows the value of the calculated indices. Toxicity response due to Fe, Cu, Cd, and Zn exposures are shown in Table-2.

Table 2. Toxicity response due to Fe, Cu, Cd, and Zn exposures.

Toxicity Response [25]		Exposure Parameters	
Parameter	Oral RfD (mg/Kg/day)	IR	2.2 L/day
Fe	0.7	EF	365 Days/year
Cu	0.04	ED	70 years
Cd	0.0005	BW	70 Kg
Zn	0.3	AT	25550 days

The pollution indices and other hazard indices were calculate using the follow shown below:

2.2.1. Degree of Contamination (C_d)

$$C_d = \sum_{i=1}^n C_{fi} \quad (1)$$

C_{fi} is a sub-index showing contamination factor, and is calculated according to Eq. (2)

$$C_{fi} = \frac{CM_i}{CS_i} - 1 \quad (2)$$

C_{fi} , CM_i , and CS_i , are the contamination factor, analytical value, and upper permissible concentration for i^{th} component respectively, while n denotes the ‘normative value’.

2.2.2. Heavy Metal Pollution Index (HPI)

$$HPI = \sum_{i=1}^n WiQi / \sum_{i=1}^n Wi \quad (3)$$

Where: Wi and Qi are unit weight and the sub-index of the i^{th} parameter, respectively, and n is the number of parameters considered. The sub-index (Qi) is calculated according to Eq. (4).

$$Qi = \sum_{i=1}^n \frac{|Mi - Ii|}{Si - Ii} \times 100 \quad (4)$$

2.2.3. Heavy Metal Evaluation Index (HEI)

$$HEI = \sum_{i=1}^n \frac{H_c}{H_{mac}} \quad (5)$$

Where:

H_c = Analyzed concentration of the respective parameter.

H_{mac} = Maximum admissible concentration of the respective parameter.

2.2.4. Hazard Quotient (HQ)

$$HQ = \frac{ADD}{RfD} \quad (6)$$

Where ADD is the average daily dose, which is calculated using equation 7.

$$ADD_i = \frac{Ci \times IR \times EF \times ED}{BW \times AT} \quad (7)$$

Where:

C_i = Concentration of the monitored parameter

IR = Ingestion rate

EF = Exposure frequency

ED = Exposure Duration

BW = Body weight

AT = Average time

2.2.5. Hazard Index (HI)

$$HI = \sum HQ_i \quad (8)$$

2.2.6. Chronic Daily Intake CDI

Chronic daily intake is calculated using modified equation 9 [26].

$$CDI = Ci \times \frac{DI}{BW} \quad (9)$$

3. Results and Discussion

3.1. Correlation of Trace Metals in the Water Samples

As shown in Table 3, the correlation among the analyzed trace metals in water samples are expressed by Pearson coefficient. Copper, selenium, and manganese had strong correlation with zinc ($r = 0.933$), chromium III ($r = 0.827$), and manganese ($r = 0.63$), respectively. Negative correlations were also observed, for instance, iron had negative correlations with cadmium, cobalt, and chromium (III). The correlation between same parameters is not necessarily uniform, and it can remarkably differ from one study area to another. In the context of analytical chemistry, the correlation matrix is both fundamental and pervasive concept, and it does not necessarily mean the presence of causality among the analyzed parameters.

Table 3. The Correlation between Trace metals in the water samples.

Correlations	Cd	Co	Cr(III)	Cu	Fe	Li	Mn	Mo	Sb	Se	Ti	Zn
Cd	1	-0.13	0.292	0.172	-0.16	0.55	0.068	0.227	-0.17	0.274	0.191	0.199
Co		1	-0.43	-0.219	-0.18	-0.22	-0.25	-0.209	0.115	-0.47	-0.374	-0.231
Cr(III)			1	0.06	-0.24	0.398	-0.17	0.396	-0.24	0.827	0.705	0.007
Cu				1	0.553	0.023	0.63	0.032	0.043	0.137	0.175	0.933
Fe					1	-0.07	0.406	-0.106	-0.04	-0.15	0.26	0.616
Li						1	0.138	0.339	-0.25	0.325	0.353	0.091
Mn							1	-0.035	-0.04	0.089	-0.094	0.65
Mo								1	-0.34	0.382	0.31	0.046
Sb									1	0.019	-0.247	-0.088
Se										1	0.628	0.011
Ti											1	0.153
Zn												1

3.2. Cadmium, Cobalt, Cr(III) and Copper in Different Water Sources

The concentrations of cadmium, cobalt, chromium III, and copper were in the ranges of 0.0001 – 0.0014, BDL – 0.0009, BDL – 0.0465, BDL – 0.111 mgL⁻¹ respectively (Table-1 and Figure A1). In decreasing order of the concentrations, the general trend of the analyzed trace metals in different water sources were: chromium (III) > copper > cadmium > cobalt (Figure 2). Cadmium was detected in all 30 sampling areas followed by copper, chromium (III), and cobalt, which were detected in 18, 14, and 14 of the sampling sites respectively (Figure A1). While the natural sources of cadmium in the analyzed water samples cannot be directly excluded, the detected concentration of cadmium are associated with activities in which cadmium is used as important component in different application, such as pigments, plastics, and battery.

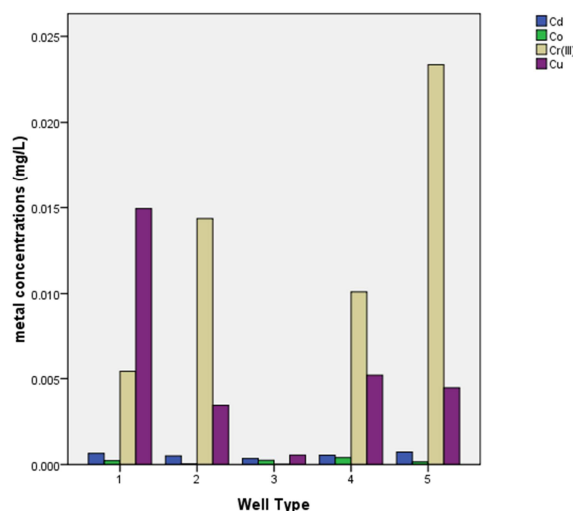


Figure 2. Cadmium, Cobalt, Cr(III) and Copper in Different Water Sources.

3.3. Iron, Lithium, Manganese and Molybdenum in Different Water Sources

The concentrations of iron, lithium, manganese and molybdenum were in the ranges of BDL – 0.035; 0.0002 – 0.0985; BDL – 0.0089, and BDL – 0.0028 mgL⁻¹ respectively (Table-1 and Figure A1). The general trend of the analyzed trace metals in different water sources in decreasing order of their concentrations were: lithium > iron > manganese > molybdenum (Figure 3). Lithium was detected in all 30 sampling areas followed by iron, manganese, and molybdenum, which were detected in 24, 14, and 3 of the sampling sites respectively (Figure A1). As in the case of cadmium, the detected concentration of lithium are associated with anthropogenic activities in which lithium-containing materials such as batteries are improperly disposed in the environment. Because the soil is the major sink of all the metals in Earth crust, therefore the occurrence and the detected concentrations of the trace metals in water sources is not an anomalous event.

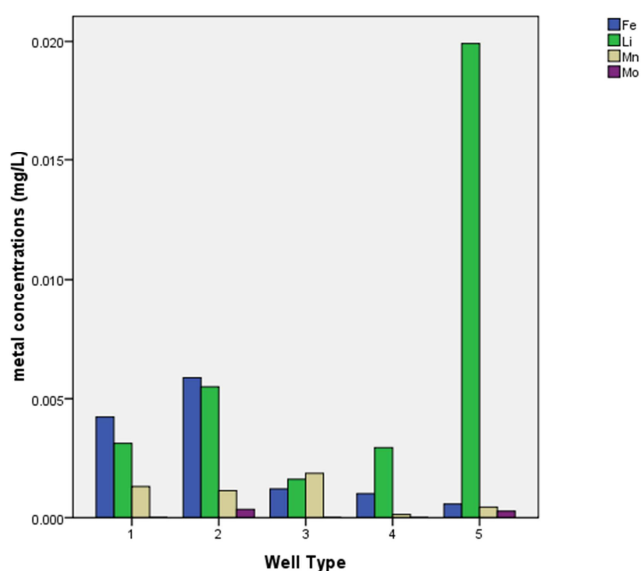


Figure 3. Iron, Lithium, Manganese and Molybdenum in Different Water Sources.

3.4. Antimony, Selenium, Titanium and Zinc in Different Water Sources

The concentrations of antimony, selenium, titanium and zinc were in the ranges of BDL – 0.0074; BDL – 0.0135;

0.00031 – 0.0071, and 0.00031 – 0.0071 mgL⁻¹ respectively (Table-1 and Figure A1). The general trend of the analyzed trace metals in different water sources in decreasing order of their concentrations were: zinc > titanium > selenium > antimony (Figure 4). Zinc and titanium were detected in all 30 sampling areas followed by antimony, and selenium, which were detected in 24, and 16 of the sampling sites respectively (Figure A1). These trace metals are naturally present in the earth crust; however, anthropogenic pressure may enhance their levels in a given environment. The leachates of domestic effluents with residues of titanium containing shampoos and soaps may penetrate the soil and conduit into groundwater resources.

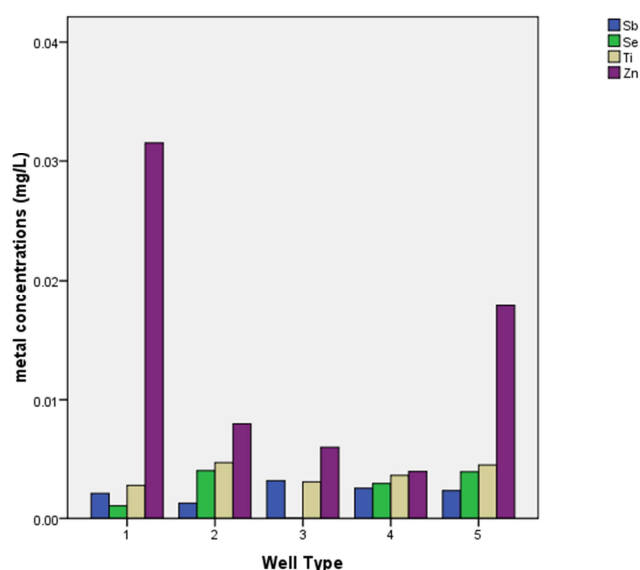


Figure 4. Antimony, Selenium, Titanium, and Zinc in Different Water Sources.

3.5. Occurrence of Metals in Water Sources

Table-4 gives a summary of the occurrence of metals in five different sources (CHDW, OHDW, SW, PBW, and BWP) from which water samples were collected. Cadmium, zinc, and lithium prevailed in all water sources. Titanium also existed in more than 80% of the water sources. Molybdenum abundance was the least in the prevailing metals.

Table 4. Percentage occurrence of the analyzed parameters in water sources.

Water source	(%) Cd	% Co	% Cr III	% Cu	% Fe	% Li	% Mn	% Mo	% Sb	% Se	% Ti	% Zn
CHDW	100	12.5	25	50	87.5	100	50	0	87.5	50	100	100
OHDW	100	25	75	75	87.5	100	25	12.5	62.5	75	100	100
SW	100	50	0	50	100	100	100	0	100	0	100	100
PBW	100	80	60	40	80	100	60	0	100	40	100	100
BWP	100	37.5	50	75	50	100	37.5	25	25	50	87.5	100

3.6. Human Health Risk Assessment Due to Toxic Metal

Heavy metals are toxic elements, and they are in the list of the noxious pollutants in the context of environmental and health sciences. Ingestion of considerable amount of heavy metals via different exposure pathways may result into several detrimental ill effects. Using the four heavy metals (Cd, Zn, Cu, and Fe), the degree of contamination (C_d) in all water sources were less than 1, thus they all fall in to the category of low degree of contamination. Similar trend was found in the study conducted in Tehran water sources [27].

The general trend of the average daily dose (ADD) of Zn, Cu, Fe, and Cd in water sources is:

$$\text{Zn} > \text{Cu} > \text{Fe} > \text{Cd}.$$

With regard to severity of the toxicity, cadmium is highly toxic, so this trend likely does not show alarming situation

in the context of cadmium risk in the water sources. As the severity of toxicity is governed by several factors such as dose, nutrition, age and even life style. Therefore, this trend might not guarantee the absence of human health risk (Figure 5).

For the case of C_d , there is a remarkable spatial variation in different water sources. While for HPI the spatial variations is less remarkable. HPI for all water samples were well below the critical value (Figure 6).

All water samples (100%) to some extent showed some levels of HEI. Moreover, all water samples showed some ADD levels with respect to Cd, Zn, and copper metal, while iron metal was over 60%. Nevertheless, the spatial variations of HI are more apparent as compared to HEI (Figure 7 & Figure A2).

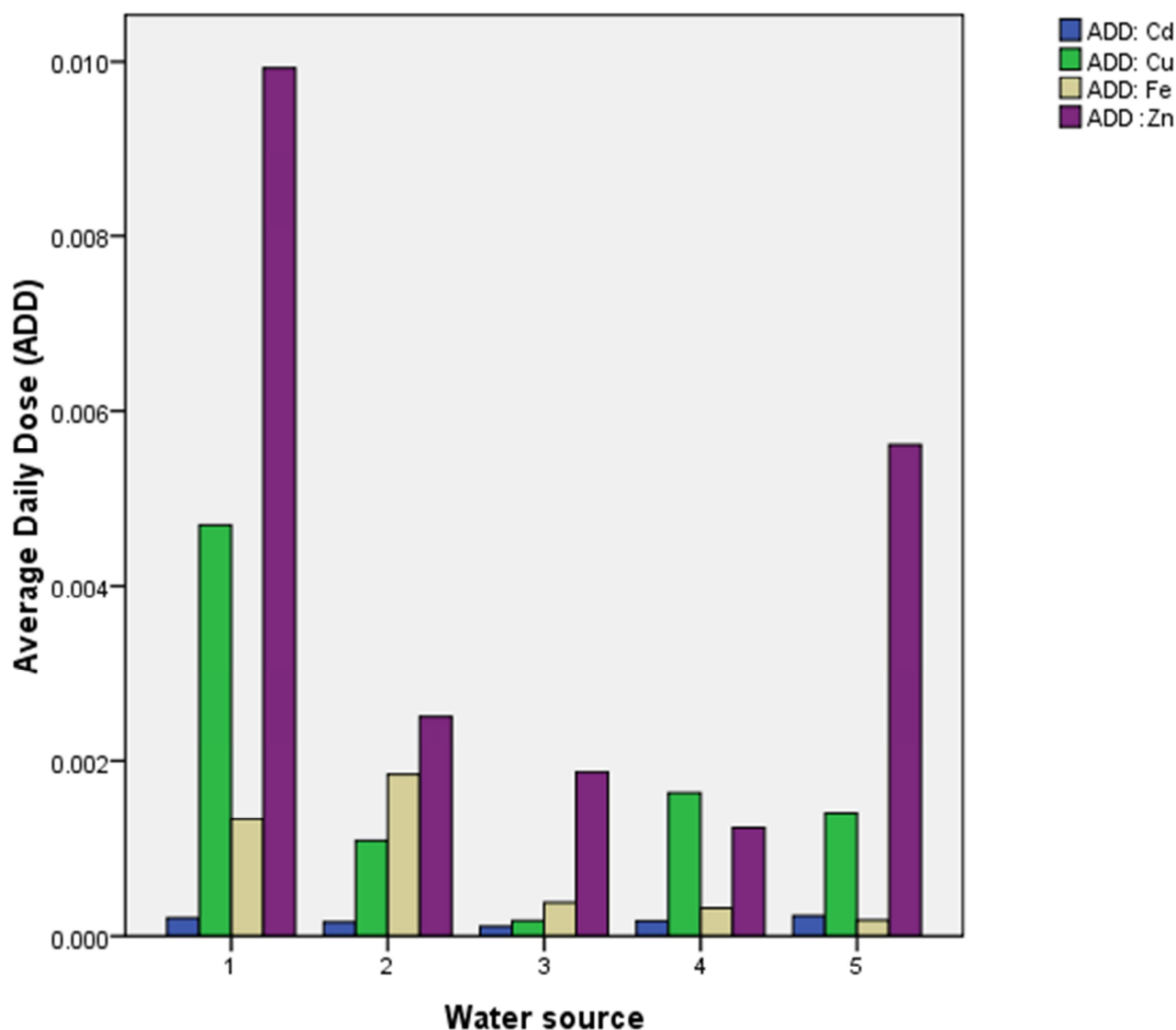


Figure 5. ADD of Cd, Cu, Fe and Zn.

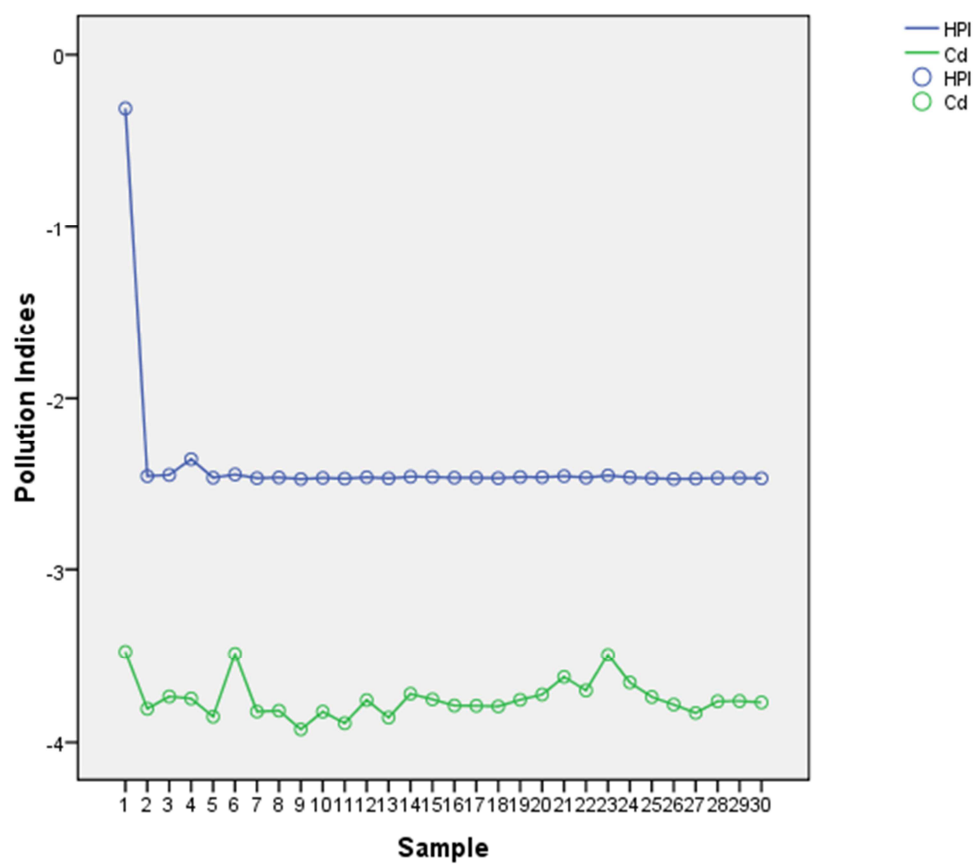


Figure 6. HPI and C_d in water samples.

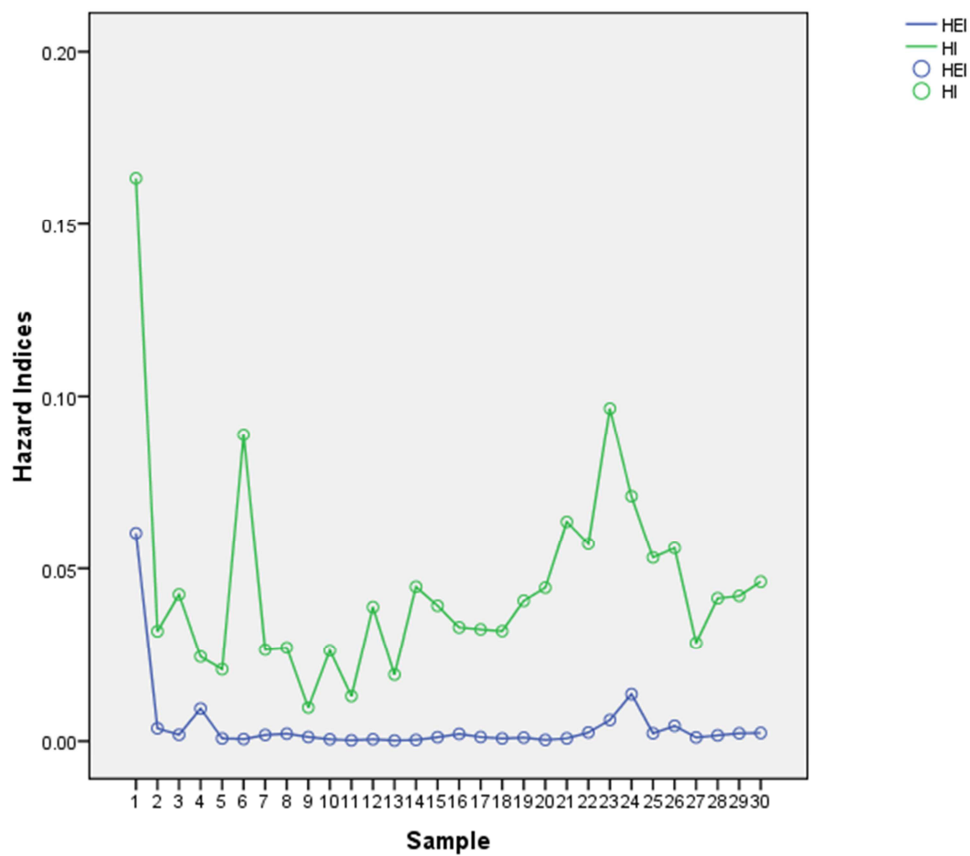


Figure 7. Hazard index in water samples.

4. Conclusion

From the twelve analyzed metals, cadmium, zinc, and lithium existed at varying concentrations in all water sources. Other metals were also detected though at relatively low abundances. Generally, from risk assessment on trace metals

using risk indices (C_d , HPI, HI and HEI), the analyzed water sources are not at the alarming health risk, however, the increasing level of environmental pollution, water sources might be potential sink of contaminants, this is significant reason that make the treatment of drinking water and monitoring implementation inevitable.

Appendix

Sampling site	Cd	Co	Cr III	Cu	Fe	Li	Mn	Mo	Sb	Se	Ti	Zn	Well Type
1	0.8	nd	0.2	111	28.5	3.8	8.9	nd	2.2	1	4.2	234	1
2	0.4	nd	1.4	4.1	4.5	4.7	8.9	nd	1.6	7.5	3.2	13.9	2
3	0.6	nd	3.5	2.6	5.4	7.5	nd	nd	3.3	0.2	4	2.8	2
4	0.1	nd	2.3	nd	35	4.2	nd	nd	1.4	1	7.1	23.1	2
5	0.3	0.5	nd	1.1	1.9	3	0.1	nd	3.3	nd	5.8	1.6	3
6	1.4	0.5	0.5	nd	1.7	2.2	nd	nd	2.1	1.1	4.5	0.7	4
7	0.4	nd	nd	nd	0.5	0.2	3.6	nd	3	nd	0.3	10.3	3
8	0.4	0.1	nd	nd	1.6	0.5	0.39	nd	0.7	nd	3	11.3	4
9	0.1	0.9	11.7	3.4	0.9	0.5	nd	nd	2.2	nd	3.1	3	4
10	0.4	0.6	nd	0.6	0.9	1.3	0.2	nd	1.2	nd	2.6	1.5	1
11	0.2	0.5	nd	nd	0.8	0.9	0.2	nd	3	nd	1.7	0.5	4
12	0.6	0.4	nd	0.7	1	0.8	0.1	nd	3.9	nd	2.4	1	5
13	0.3	nd	nd	nd	0.7	0.8	0.9	nd	2.7	0.1	2.5	0.19	1
14	0.7	0.6	nd	nd	1.5	0.6	0.4	nd	3.6	nd	0.8	0.13	1
15	0.6	0.6	nd	0.4	1.6	7.6	0.1	nd	1.2	nd	3.7	4.5	5
16	0.5	0.1	nd	nd	0.7	4.4	nd	nd	3.4	nd	1.9	11.7	5
17	0.5	nd	nd	nd	0.7	3.1	nd	nd	3.8	nd	2.3	6.1	1
18	0.5	0.1	nd	nd	0.1	7.7	nd	nd	2.8	nd	3.8	4.3	2
19	0.6	0.1	nd	2.6	1.7	3.5	nd	nd	1.1	nd	2.7	1.3	2
20	0.7	0.3	nd	0.1	0.6	0.5	nd	nd	2.6	0.4	1.7	0.9	1
21	1	0.3	nd	nd	1	4.1	nd	nd	0.6	nd	2	3	1
22	0.8	nd	43.2	7.8	nd	10.6	nd	nd	nd	6.9	6	7	1
23	1.4	nd	38	6.5	0.7	98.5	2.9	1	nd	7.1	6	29.2	5
24	0.9	nd	46.5	8.4	nd	16.5	nd	0.9	0.4	6.9	6	74.6	5
25	0.7	nd	42.6	11.4	nd	7.6	nd	nd	7.4	12.1	6	1.9	5
26	0.6	nd	38.3	22.6	nd	10.5	0.1	nd	4.6	13.5	5.7	4.1	4
27	0.4	nd	36.4	3.9	nd	4	nd	nd	nd	1.2	5.3	2.3	5
28	0.6	nd	36.4	3.9	nd	3.6	nd	nd	Nd	6.4	5.1	5.8	2
29	0.6	nd	37.8	4.2	0.2	6.4	0.1	nd	Nd	8	5.8	9	2
30	0.6	nd	33.5	10.2	0.1	6.4	nd	2.8	nd	8.9	5.6	3.7	2

Figure A1. Analyzed parameters all in $\mu\text{g/L}$; nd: not detected; 1 = CHDW; 2 = OHDW; 3 = SW; 4 = PBW; 5 = BWP.

Sample	C _d	HPI	HEI	ADD: Cd	ADD: Cu	ADD: Fe	ADD: Zn	HI	Water Source
1	-3.473	-0.3080	0.06033	2.51E-05	0.003489	0.00090	0.007351	0.1633	1
2	-3.805	-2.4553	0.00369	1.26E-05	0.000129	0.00141	0.000437	0.0318	2
3	-3.735	-2.4482	0.00184	1.89E-05	8.17E-05	0.00170	0.000088	0.0425	2
4	-3.747	-2.3572	0.00938	3.14E-06	0	0.01100	0.000726	0.0244	2
5	-3.851	-2.4646	0.00079	9.43E-06	3.46E-05	0.00060	5.03E-05	0.0207	3
6	-3.485	-2.4459	0.00061	0.000044	0	0.00053	0.000022	0.0888	1
7	-3.822	-2.4674	0.00181	1.26E-05	0	0.00016	0.000324	0.0264	3
8	-3.816	-2.4637	0.00214	1.26E-05	0	0.00050	0.000355	0.0270	4
9	-3.925	-2.4722	0.00119	3.14E-06	0.000107	0.00028	9.43E-05	0.0097	4
10	-3.822	-2.4661	0.00055	1.26E-05	1.89E-05	0.00028	4.71E-05	0.0262	1
11	-3.889	-2.4697	0.00024	6.29E-06	0	0.00025	1.57E-05	0.0130	4
12	-3.756	-2.4623	0.00053	1.89E-05	0.000022	0.00031	3.14E-05	0.0388	5
13	-3.856	-2.4683	0.00019	9.43E-06	0	0.00022	5.97E-06	0.0192	1
14	-3.719	-2.4587	0.00038	0.000022	0	0.00047	4.09E-06	0.0447	1
15	-3.752	-2.4603	0.00114	1.89E-05	1.26E-05	0.00050	0.000141	0.0392	5
16	-3.787	-2.4650	0.00208	1.57E-05	0	0.00022	0.000368	0.0330	5
17	-3.789	-2.4649	0.00118	1.57E-05	0	0.00022	0.000192	0.0324	1
18	-3.792	-2.4669	0.00079	1.57E-05	0	0.00003	0.000135	0.0319	2
19	-3.754	-2.4606	0.00100	1.89E-05	8.17E-05	0.00053	4.09E-05	0.0407	2
20	-3.724	-2.4618	0.00037	0.000022	3.14E-06	0.00019	2.83E-05	0.0444	1
21	-3.621	-2.4552	0.00081	3.14E-05	0	0.00031	9.43E-05	0.0636	1
22	-3.700	-2.4645	0.00251	2.51E-05	0.000245	0.00000	0.00022	0.0571	1
23	-3.490	-2.4516	0.00609	0.000044	0.000204	0.00022	0.000918	0.0965	5
24	-3.653	-2.4627	0.01353	2.83E-05	0.000264	0.00000	0.002345	0.0710	5
25	-3.738	-2.4672	0.00226	0.000022	0.000358	0.00000	5.97E-05	0.0532	5
26	-3.782	-2.4724	0.00440	1.89E-05	0.00071	0.00000	0.000129	0.0559	4
27	-3.830	-2.4701	0.00106	1.26E-05	0.000123	0.00000	7.23E-05	0.0284	5
28	-3.763	-2.4667	0.00166	1.89E-05	0.000123	0.00000	0.000182	0.0414	2
29	-3.761	-2.4662	0.00226	1.89E-05	0.000132	0.00006	0.000283	0.0420	2
30	-3.769	-2.4683	0.00235	1.89E-05	0.000321	0.00003	0.000116	0.0462	2

Figure A2. Pollution indices in water samples.

Acknowledgement

We highly acknowledge to His Majesty Government of Brunei Darussalam for funding this project. State University of Zanzibar for supporting the study. We also thank Hjh Faridah, Azzlin, Najib and other UBD chemistry laboratory staffs for their tireless assistance.

References

- [1] Mohamed AAJ, Ibrahim AR, Lee HL, Hanna M, Mohamed M, Fadilah T, Nur AR (2016) Assessment of Groundwater Quality Parameters in Northern Region of Zanzibar Island, J Chem Eng Bioanalyticalchem, 1: 1-8.
- [2] Shittu A, Chifu EN, Abdussalam BS, Hafeez YH (2016) Evaluation of Radioactivity Concentration in Drinking Water Collected from Local Wells and Boreholes of Dutse Town, North West, Nigeria Int J Envi Monit Analy, 4: 6-11.
- [3] Mohamed AAJ, Ibrahim AR, Lee HL, Khamis SA, Mwevura H, Mbwana KH. (2016) An Index Approach to Metallic Pollution in Groundwater Sources of South Region of Pemba Island, Scie J Analyt Chem, 4: 12-21.
- [4] Armon R, Kitty J (1994) The Health Dimension of Groundwater Contamination. In: Groundwater Contamination and Control, Holler (Ed.), Marcel Dekker, Inc, New York, USA.
- [5] Epa.ohio.gov.gwqcp.fluoride_factsheet, Fluoride in Ohio's Ground water, Fact Sheet 2012-01, Series on Ohio's Ground water Quality, March 2012.
- [6] Oiste AM (2014) Groundwater quality assessment in urban environment, Int J EnvirSci Tech, 11:2095–2102.
- [7] Nagarajan R, Rajmohan N, Mahendran U, Senthamilkumar S(2010) Evaluation of groundwater quality and its suitability for drinking and agriculture use in Thanjavur city, Tamil nadu, India, Envir Monit Asse, 171: 289-308.
- [8] Mattiesen H (2008) Detailed chemical analyses of groundwater as a tool for monitoring urban archaeological deposits: results from Bryggen in Gergen, J Archaeological Sci, 35: 1378–1388.
- [9] Milenkovic N, Damjanovic M, Ristic M (2005) Study of heavy metal pollution in sediments from the iron gate (danuae river), serbia and Montenegro, Polish Journal of Environmental Studies, 14: 781-787.
- [10] Wu JL, Zeng, HA, Yu H, Ma L, Xu, LS, Qin BQ (2012) Water and sediment quality in lakes along the middle and lower reaches of the Yangtze River, China Water Resour. Manage, 12:3601–3618.

- [11] Ikejimba CC, Sakpa S (2014) Comparative study of some heavy metals' concentrations in water and Tympanotonus fuscatus var radula samples of Egbokodo River, Warri, Nigeria, *Int J Modern Biol Re*, 2: 7-15.
- [12] Valavanidis A, Vlachogianni T (2010) Metal pollution in ecosystem, ecotoxicology studies & risk assessment in the marine environment. Dept. of Chemistry, University of Athens University Campus Zografou, 15784 Athens, Greece.
- [13] EPA (1986) Air quality criteria document for lead. Environmental Criteria and Assessment Office, US Environmental Protection Agency, Research Triangle Park, North Carolina.
- [14] Rajappa B, Manjappa S, Puttaiah ET (2010) Monitoring of heavy metal concentration in groundwater of Hakinaka Taluk, India, *Contemporary Eng Sci*, 3: 183-190.
- [15] Nriagu JO (1988) A silent epidemic of environmental metal poisoning? *Environmental Pollution*, 50: 139-161.
- [16] Osibanjo O, Majolagbe AO (2012) Physicochemical quality assessment of groundwater based on land use in Lagos city, Southwest, Nigeria, *Chem J*, 2: 79-86.
- [17] Buschmann J, Berg M, Stengel C, Winkel L, Sampson, ML, Trang, PTK, Viet PH (2008) Contamination of drinking water resources in the Mekong Delta floodplains: Arsenic and other trace metals pose serious health risks to population, *EnvirInt*, 34, 756-764.
- [18] Fraga CG, Oteiza PI (2002) Iron toxicity and antioxidant nutrients, *Toxicology*, 180: 23-32.
- [19] EPA (2013) Consumer Factsheet on: COPPER. Retrieved on February 26, 2016 from <http://water.epa.gov/drink/contaminants/index.cfm>
- [20] APHA (2005) Standard methods for the examination of water and waste water, 21st edition, American Public Health Association, Washington, DC, USA.
- [21] Prasad B, Bose JM (2001) Evaluation of heavy metal pollution index for surface and spring water near a limestone mining area of the lower Himalayas, *Envir Geology*, 41: 183-188.
- [22] Backman B, Bodis D, Lahermo P, Rapant S (1997) Application of a groundwater contamination index in Finland and Slovakia, *Envir Geology*, 36: 55-64.
- [23] Rubio B, Nombela MA, Vilas F (2000) Geochemistry of Major and Trace Elements in Sediments of the Ria de Vigo (NW Spain): an Assessment of Metal Pollution, *Marine Pollution Bulletin*, 40: 968-980.
- [24] Edet AE, Offiong OE (2002) Evaluation of water quality pollution indices for heavy metal contamination monitoring. A study case from Akpabuyo - Odukpani area, Lower Cross River Basin, (southeastern Nigeria), *Geo J*, 57: 295-304.
- [25] Wongsasuluk P, Chotpantarat S, Siri Wong W, Robson M (2014) Heavy metal contamination and human health risk assessment in drinking water from shallow groundwater wells in an agricultural area in Ubon Ratchathani province, Thailand, *Environ Geochem Health*, 36: 169-182.
- [26] Muhammed S, Shari MT, Khan S (2011) Health Risk Assessment of Heavy metals and their source apportionment in drinking water of Kohitan region, northern Pakistan. *Microchem J*, 98: 334-343.
- [27] Nasrabadi T (2015) An Index Approach to Metallic Pollution in River Waters *Int. J. Environ. Res.*, 9(1): 385-394.